

e^x PRIMEX TOWER

SHAPING the **SKYLINE**



50 STOREY
GRADE **A** and
LEED CERTIFIED
OFFICE and HOTEL DEVELOPMENT

**YOUR NEW PREMIUM
CORPORATE ADDRESS**

EDSA, corner CONNECTICUT and
FLORIDA STREETS, GREENHILLS,
SAN JUAN, METRO MANILA, PHILIPPINES

e^x PRIMEX REALTY CORPORATION
a PRIME EXPONENT in choice real estate

**For announcement purposes only.*

e^x PRIMEX TOWER

SHAPING the SKYLINE



YOUR **NEW PREMIUM** CORPORATE ADDRESS

NEARBY TRAIN STATIONS :

- NORTH TRIANGLE 6.5 KM
- QUEZON AVENUE 5.2 KM
- GMA KAMUNING 4.0 KM
- CUBAO 2.1 KM
- ANNAPOLIS-SANTOLAN 678 MTRS
- ORTIGAS 903 MTRS
- BUENDIA 6.1 KM
- MAKATI 7.1 KM

*Estimated Distance based on www.wikimapia.org

*For announcement purposes only.

VIEW OF **GREENERY** FROM **ALL ANGLES**



COMMANDING VIEW OF
NATURE & PROGRESS

The 50-storey Primex Tower will rise on a 1,944sqm. prime property bounded by EDSA, Connecticut and Florida Streets in Greenhills, San Juan, Metro Manila or more popularly known as the Northern Gateway to the exclusive Greenhills Villages.

With its over-looking view of the lush greens of the golf courses of Wack-Wack and Camp Aguinaldo, Primex Tower provides its business locators a refreshing scene of the environment and is envisioned or projected to be the crowning symbol of the Company's strength and stability as the Primex Group of Companies makes Primex Tower its headquarters.

e^x PRIMEX TOWER

SHAPING the **SKYLINE**

AMENITIES

HOTELS
11 FLOORS

OFFICE
27 FLOORS

ABOVE GROUND PARKING
6 FLOORS

COMMERCIAL
2 FLOORS

BASEMENT PARKING
4 FLOORS

PENTHOUSE

50F
49F
48F
47F
46F
45F
43F
42F
41F
40F

39F
38F
37F
36F
35F
33F
32F
31F

OFFICE with MECHANICAL ROOM 30F

29F
28F
27F
26F
25F
23F
22F
21F
20F
19F
18F
17F
16F
15F
12F
11F
10F
9F
8F
7F
6F
5F
3F
2F

MEZZANINE
GROUND FLOOR

B1
B2
B3
B5

GRADE A and LEED CERTIFIED

HEALTHY DEMOGRAPHIC COUNT

Serviced by ultra modern high speed Mitsubishi elevators.

17 ELEVATOR CARS:
2 Parking Elevators
7 Office Elevators
8 Hotel Elevators

BUILDING PERSPECTIVE

YOUR **NEW PREMIUM** CORPORATE ADDRESS

*For announcement purposes only.

e^x PRIMEX TOWER

YOUR **NEW PREMIUM** CORPORATE ADDRESS

SHAPING the **SKYLINE**

EDSA corner CONNECTICUT and FLORIDA STREETS, GREENHILLS, SAN JUAN, METRO MANILA, PHILIPPINES
P O O L D E C K



M A D C O W
B A R
T H E S K Y

PROPOSED CONCEPTS and INTERIOR DESIGNS

YOUR **NEW PREMIUM** CORPORATE ADDRESS

*For announcement purposes only.

e^x PRIMEX TOWER

YOUR **NEW PREMIUM** CORPORATE ADDRESS



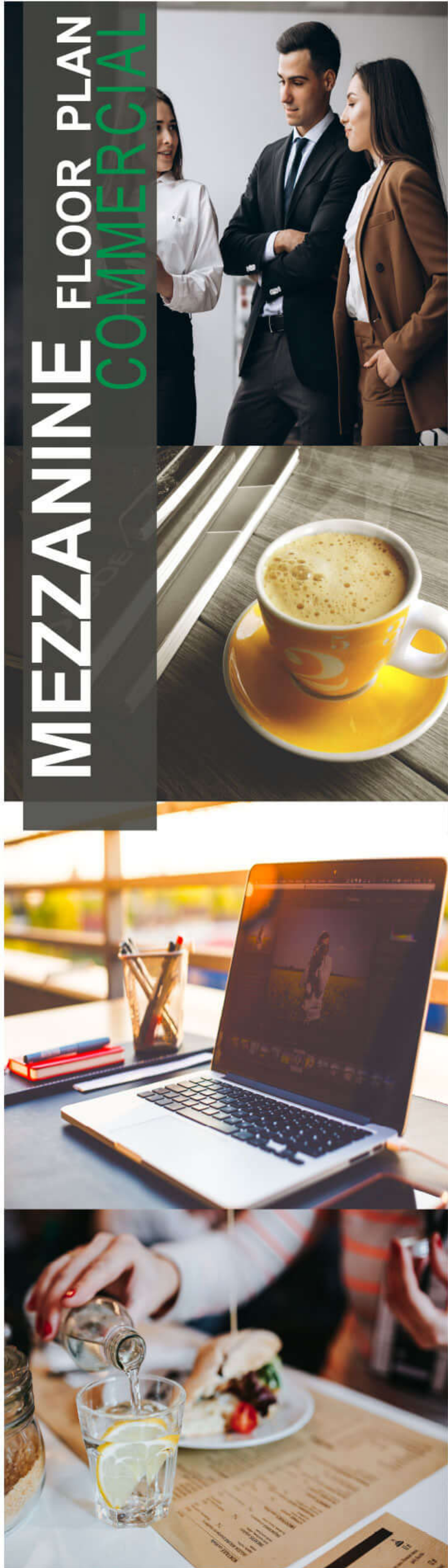
GROUND FLOOR PLAN
COMMERCIAL



*For announcement purposes only.

ex PRIMEX TOWER

YOUR NEW PREMIUM CORPORATE ADDRESS



MEZZANINE FLOOR PLAN
COMMERCIAL



e^x PRIMEX TOWER

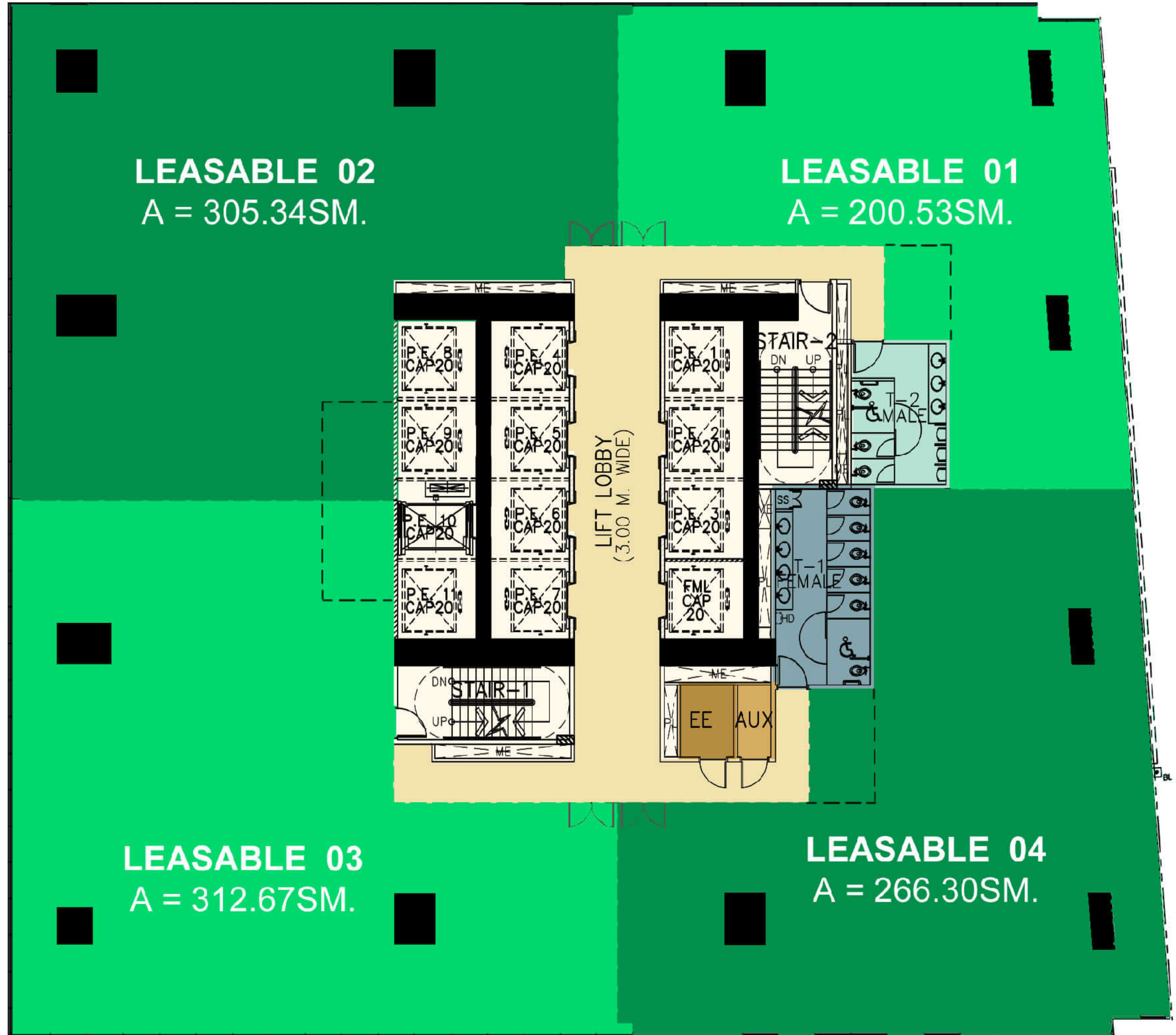
YOUR **NEW PREMIUM** CORPORATE ADDRESS

F L O R I D A S T R E E T



4 CUTS FLOOR PLAN OFFICE

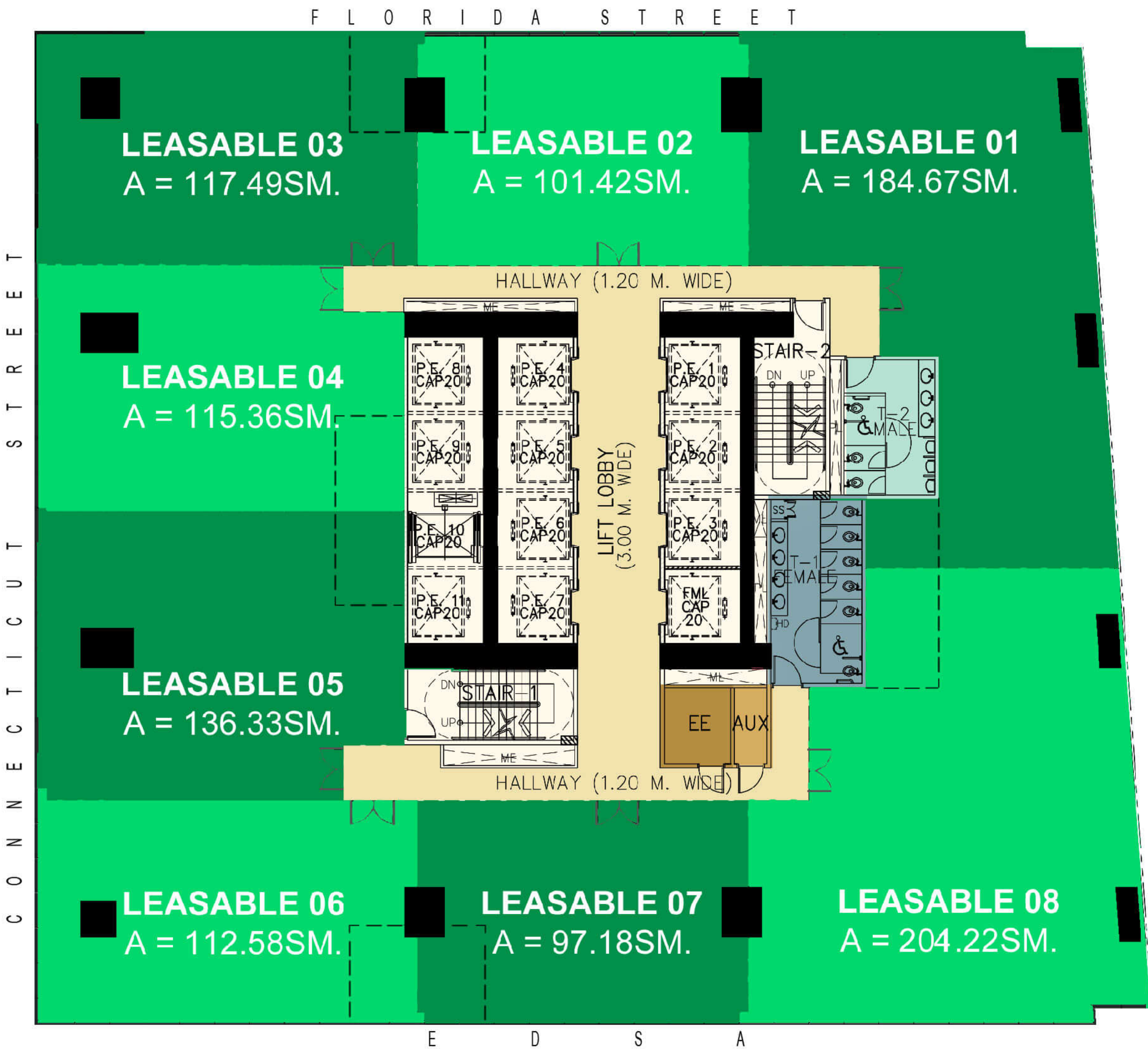
C O N N E C T I C U T S T R E E T



*For announcement purposes only.

e^x PRIMEX TOWER

YOUR **NEW PREMIUM** CORPORATE ADDRESS



C O N N E C T I C U T S T R E E T



*For announcement purposes only.

e^x PRIMEX TOWER

YOUR **NEW PREMIUM** CORPORATE ADDRESS



UNIT FEATURES & PROVISIONS

| | | |
|-------------------------------|---|---------------------------------|
| FLOOR | : | PLAIN CEMENT STRAIGHT to FINISH |
| WALLS | : | PLAIN CEMENT PAINTED FINISH |
| CEILING | : | 12mm ORDINARY GYPSUM BOARD |
| FIRE DETECTION & ALARM SYSTEM | : | SCHNEIDER |
| FIRE SUPPRESSION SYSTEM | : | SPRINKLER SYSTEM |
| TELECOMMUNICATION & BROADBAND | : | GLOBE and PLDT |



FreePik.com/photos/business - photo created by dtt26978 - www.freepik.com

DESIGN INSPIRATION



THIS PROJECT IS PURSUING
PEZA ACCREDITATION and
LEED GOLD CERTIFICATION

**GREEN REAL
 INFORMATION**

| | |
|---|--|
| ADDRESS | EDSA corner Connecticut Street and Florida Street, Brgy. Greenhills, San Juan |
| OWNER / DEVELOPER | PRIMEX REALTY CORPORATION |
| TARGET TURNOVER DATE | JUNE 06, 2022 |
| LAND AREA | 1,944 SQM |
| CONSTRUCTION FLOOR AREA | 73,798.51 SQM |
| GROSS FLOOR AREA | 55,617.74 SQM |
| NUMBER OF FLOORS | 50-STOREY BUILDING |
| OFFICE UNIT | 93 OFFICE UNITS |
| COMMERCIAL / SHOPS | 6 COMMERCIAL UNITS |
| HOTEL ROOMS | 194 ROOMS + EXECUTIVE LOUNGE |
| PARKING SLOTS | 571 PARKING SLOTS |
| ELEVATORS | 17 ELEVATOR CARS 2 Parking Elevators 7 Office Elevators 8 Hotel Elevators |
| ELEVATOR LOBBY WIDTH | 3.00 M |
| BUILDING HEIGHT | 202.80 M |
| FLOOR TO CEILING HEIGHT (OFFICE FLOORS) | 2.8 M |
| HALLWAY WIDTH | 1.20 M |

*For announcement purposes only.

e^x PRIMEX TOWER

YOUR **NEW PREMIUM** CORPORATE ADDRESS

EDSA corner CONNECTICUT and FLORIDA STREETS, GREENHILLS, SAN JUAN, METRO MANILA, PHILIPPINES

HOTEL LOBBY

LOBBY

#Straightlines

#Tall

A luxury **5-star Hotel**
nestled amid the vibrant Greenhills
Commercial Complex and the rich
residential enclaves of Greenhills.



PROPOSED CONCEPTS and INTERIOR DESIGNS

*For announcement purposes only

ex PRIMEX TOWER

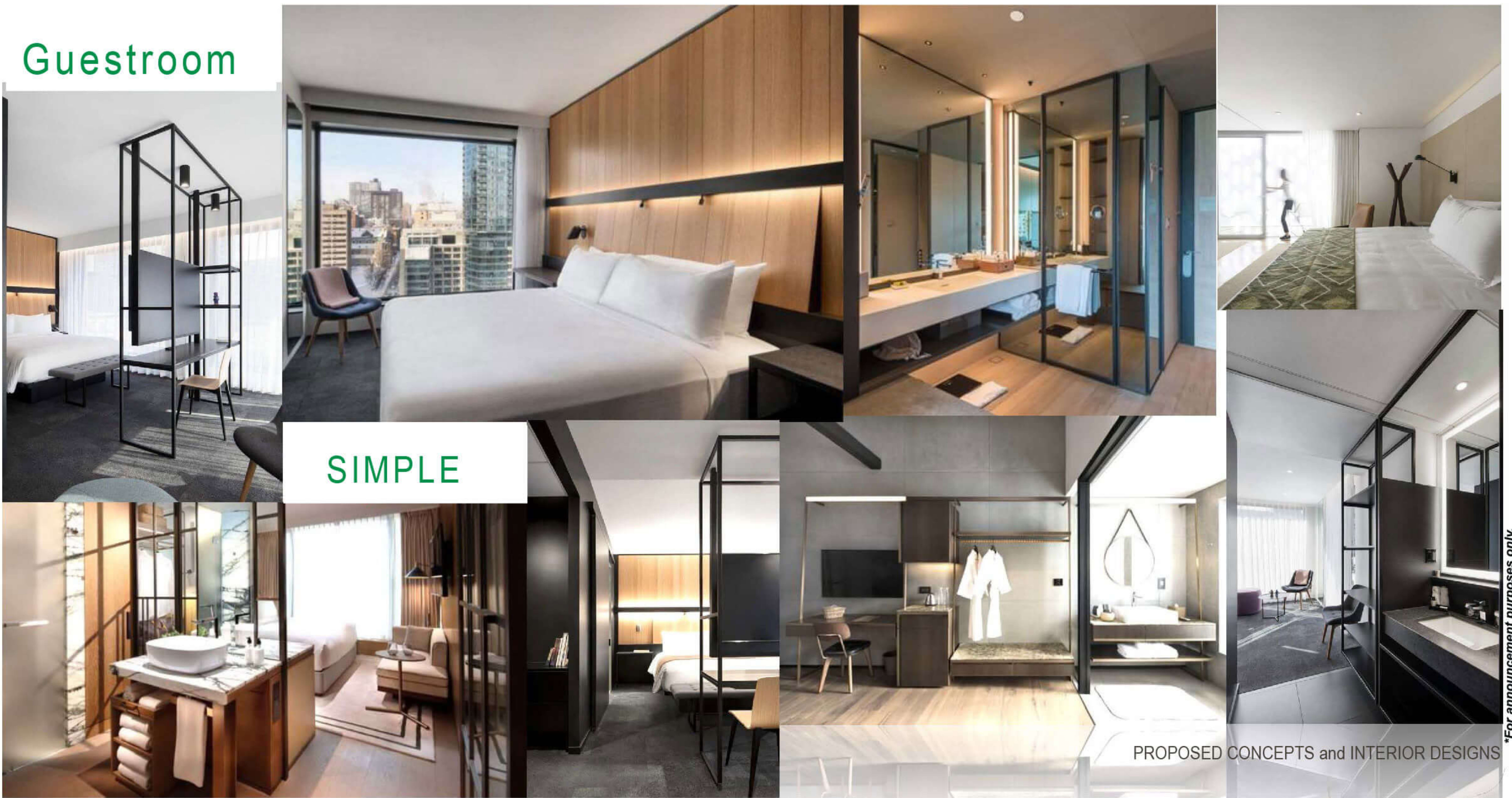
YOUR **NEW PREMIUM** CORPORATE ADDRESS

EDSA CORNER CONNECTICUT AND FLORIDA STREETS, GREENHILLS, SAN JUAN, METRO MANILA, PHILIPPINES

HOTEL ROOMS

194 luxurious, spacious and well-appointed de-luxe rooms and suites for the discerning traveler.

Guestroom



SIMPLE

PROPOSED CONCEPTS and INTERIOR DESIGNS

#relaxing

*For announcement purposes only.

ex PRIMEX TOWER

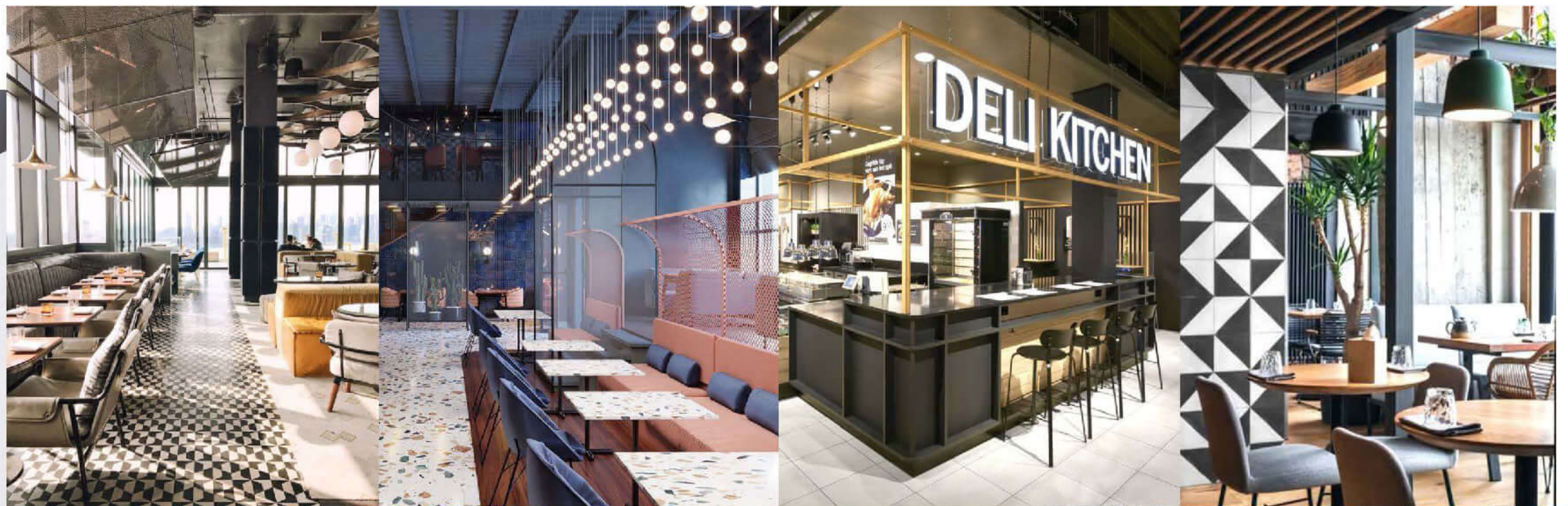
YOUR NEW PREMIUM CORPORATE ADDRESS

EDSA corner CONNECTICUT and FLORIDA STREETS, GREENHILLS, SAN JUAN, METRO MANILA, PHILIPPINES

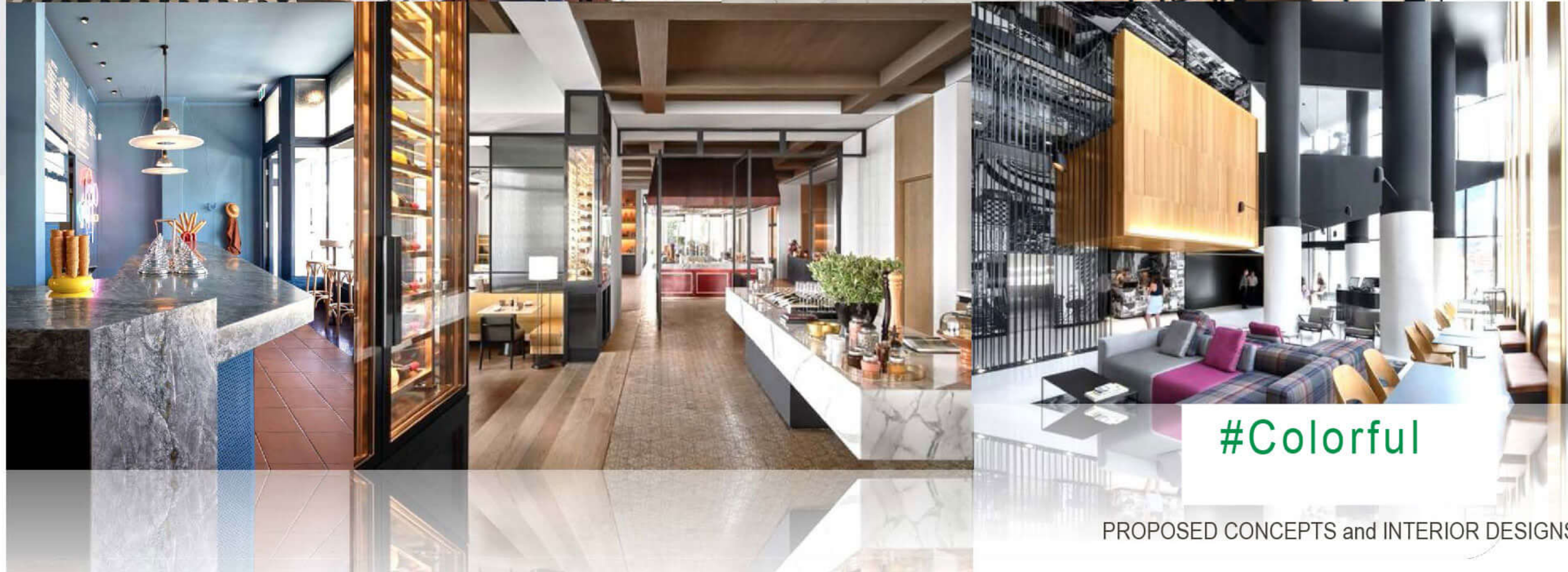
A M E N I T I E S

PRIMEX TOWER will boast two restaurants, a lobby lounge and a rooftop bar with a dramatic view of the Metro Manila skyline.

All Day Dining



#casual



#Colorful

PROPOSED CONCEPTS and INTERIOR DESIGNS

*For announcement purposes only.

ex PRIMEX TOWER

YOUR NEW PREMIUM CORPORATE ADDRESS

EDSA corner CONNECTICUT and FLORIDA STREETS, GREENHILLS, SAN JUAN, METRO MANILA, PHILIPPINES

A M E N I T I E S

The hotel will also feature a **fitness centre** and a **swimming pool** to encourage guests to stay on top of their game with extensive fitness offerings focused on inspiring the mind and energizing the body.

GYM



#ActivePlay

SIMPLE

PROPOSED CONCEPTS and INTERIOR DESIGNS

*For announcement purposes only.

ex PRIMEX TOWER

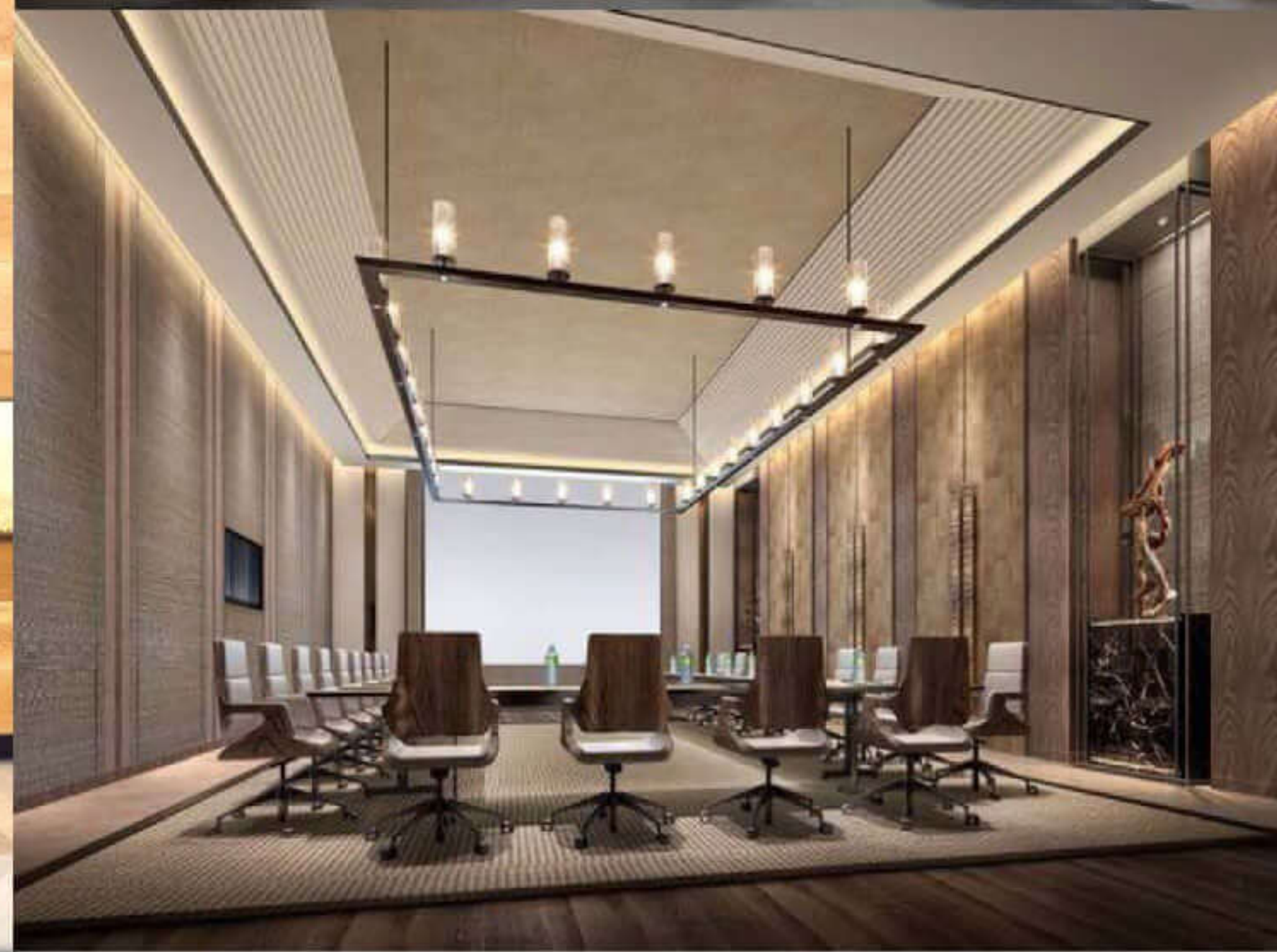
YOUR NEW PREMIUM CORPORATE ADDRESS

EDSA corner CONNECTICUT and FLORIDA STREETS, GREENHILLS, SAN JUAN, METRO MANILA, PHILIPPINES

A M E N I T I E S

Dynamic meeting and events facilities will include a ballroom, private meeting rooms and a well-equipped business centre designed to foster collaboration and creativity under the Pullman brand's **MEET / PLAY** concept.

#MeetN'Play



S I M P L E



#Digital



PHONE BOOTHS

#Digital



PROPOSED CONCEPTS and INTERIOR DESIGNS

*For announcement purposes only.

e^x PRIMEX TOWER

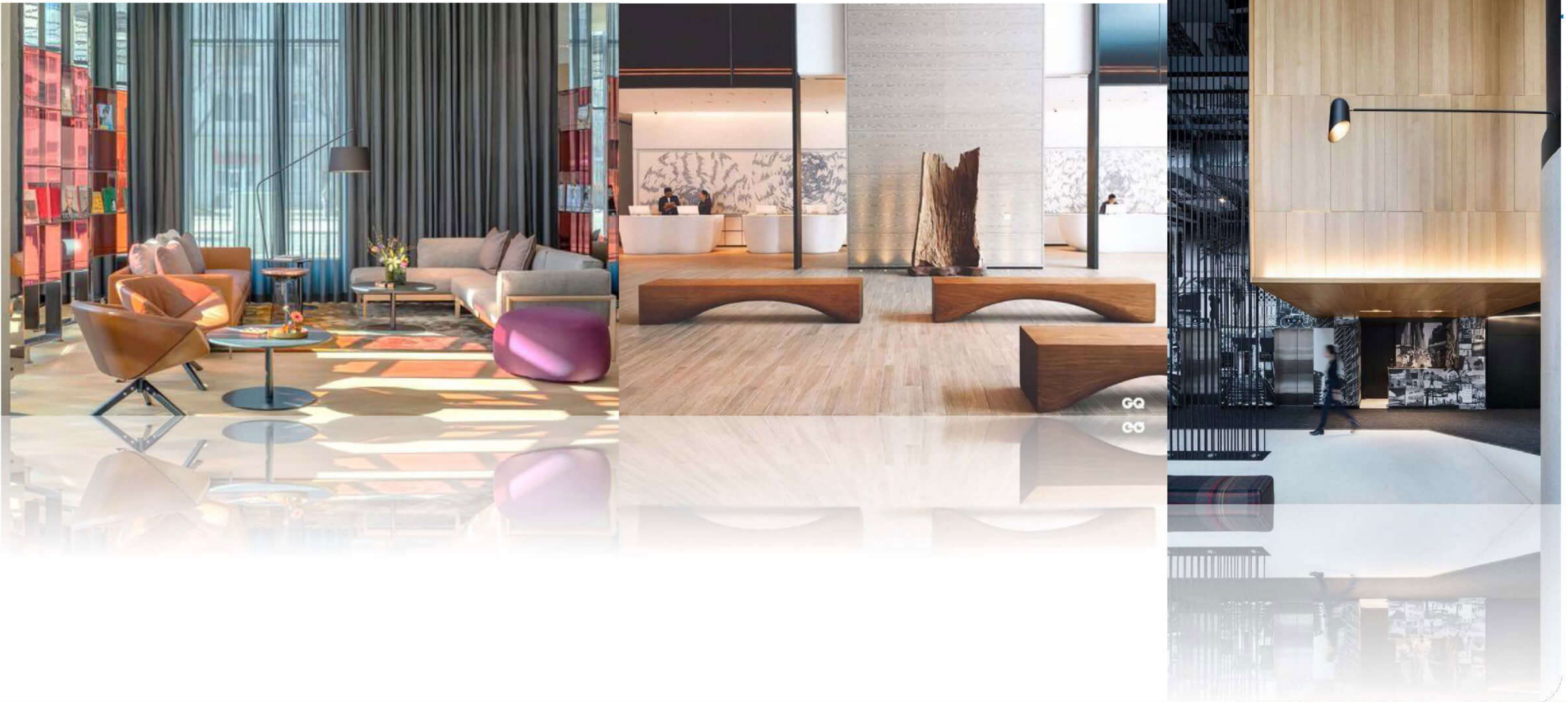
YOUR **NEW PREMIUM** CORPORATE ADDRESS

HOTEL PROPERTY MANAGEMENT

LINES



a world leading hospitality group consisting of more than 5,000 properties and 10,000 food and beverage venues throughout 110 countries. The group has one of the industry's most diverse and fully-integrated hospitality ecosystems encompassing luxury and premium brands, midscale and economy offerings, unique lifestyle concepts, entertainment and nightlife venues, restaurants and bars, branded private residences, shared accommodation properties, concierge services, co-working spaces and more.



#Colorful

PROPOSED CONCEPTS and INTERIOR DESIGNS

*For announcement purposes only.



EDSA corner CONNECTICUT and FLORIDA STREETS, GREENHILLS, SAN JUAN, METRO MANILA, PHILIPPINES

e^x PRIMEX TOWER

YOUR **NEW PREMIUM** CORPORATE ADDRESS

PROPOSED CONCEPTS and INTERIOR DESIGNS



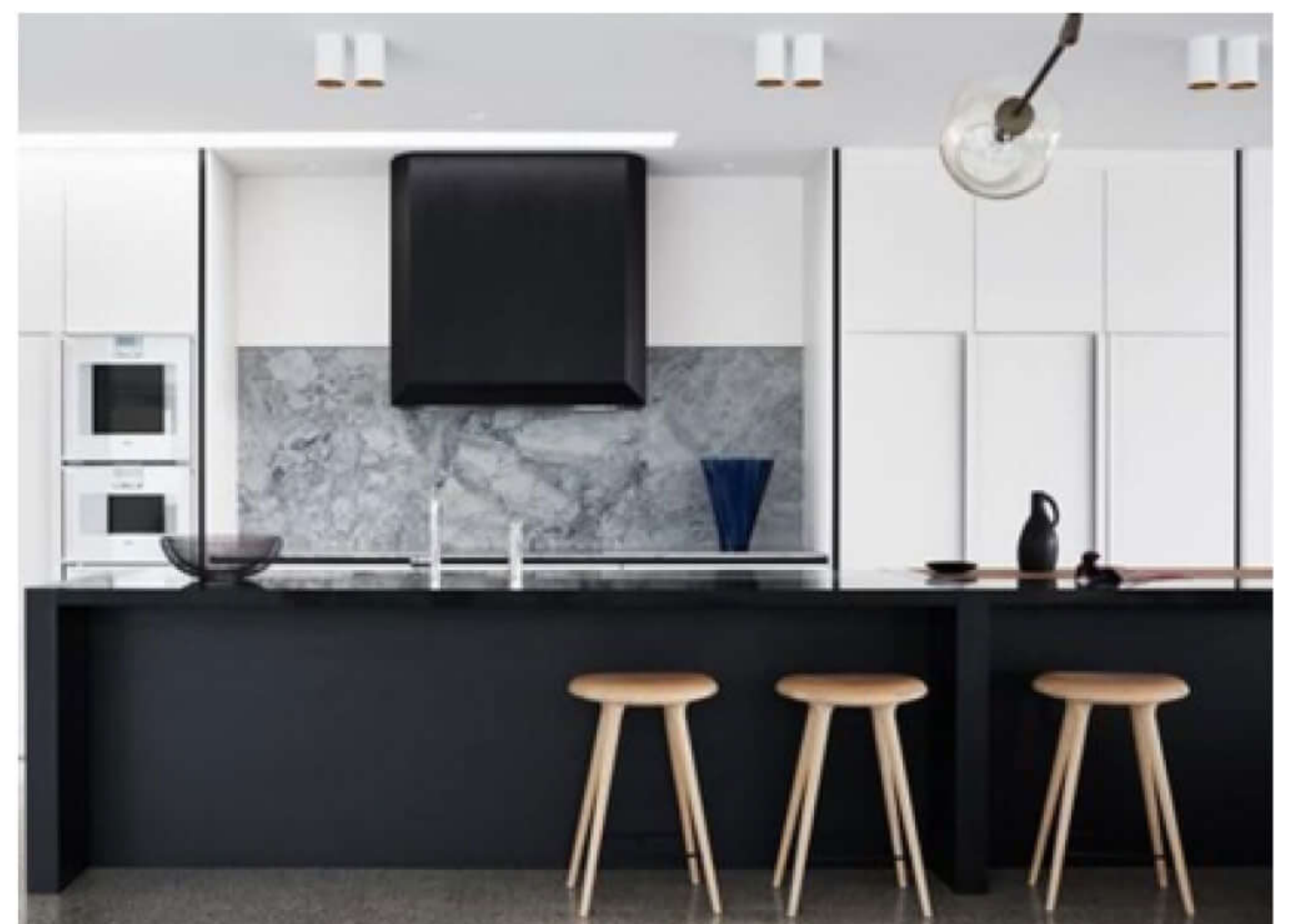
PENTHOUSE FLOOR 4 RESIDENTIAL UNITS





PROPOSED CONCEPTS and INTERIOR DESIGNS

EDSA corner CONNECTICUT
and FLORIDA STREETS,
GREENHILLS, SAN JUAN,
METRO MANILA, PHILIPPINES



e^x PRIMEX TOWER

YOUR **NEW PREMIUM** CORPORATE ADDRESS



PROPOSED CONCEPTS and INTERIOR DESIGNS

HIGH CEILING D E S I G N

S L E E K
M O D E R N

EDSA corner CONNECTICUT
and FLORIDA STREETS,
GREENHILLS, SAN JUAN,
METRO MANILA, PHILIPPINES

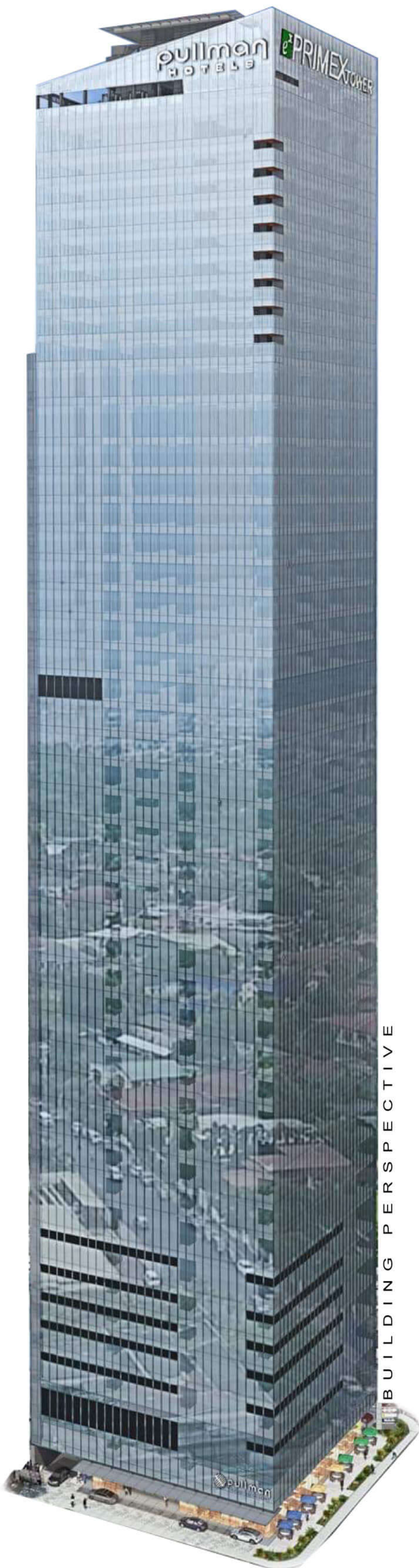
PROPOSED CONCEPTS and INTERIOR DESIGNS



e^x PRIMEX TOWER

YOUR **NEW PREMIUM** CORPORATE ADDRESS

EDSA corner CONNECTICUT and FLORIDA STREETS, GREENHILLS, SAN JUAN, METRO MANILA, PHILIPPINES
CONSTRUCTION TEAM



PLUMBING/
SANITARY & FIRE
PROTECTION CONSULTANT



Rowena G. Berroya / Partner / Project Director
OFFICE & HOTEL
INTERIOR DESIGNER



*For announcement purposes only.